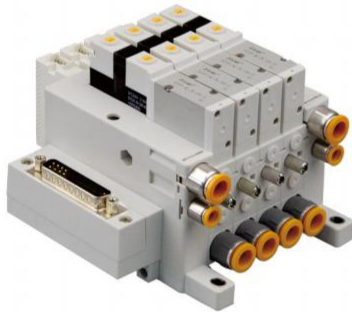


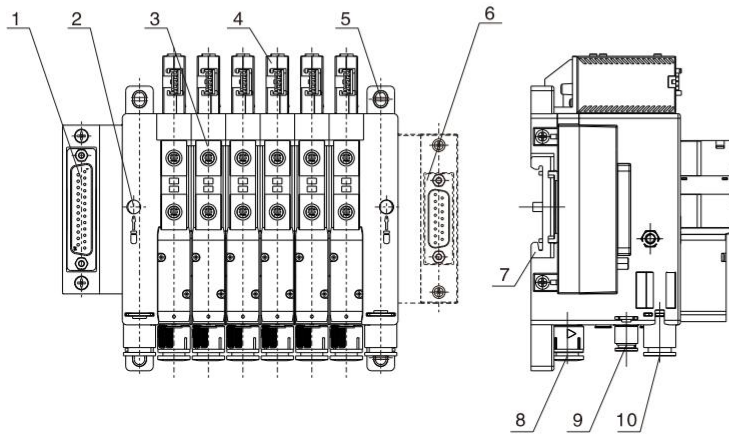
EZPV/EZP2V

External vacuum control unit (multi-pin type)



Product Features

- The solenoid valve wiring/vacuum pressure gauge uses D-SUB connectors, making the overall wiring of the product more compact and aesthetically pleasing.
- A centralized external vacuum source port is provided, with built-in vacuum control, vacuum break control, vacuum break flow adjustment, vacuum filtration, and an optional vacuum pressure gauge.
- An integrated vacuum filter element is included, which can be conveniently and quickly replaced.
- A combination of 35mm DIN rail mounting and screw hole mounting is offered to meet various installation requirements.



1. 25-pin D-SUB socket
2. Guide bar holder Tightening bolt holes
3. Rail mounting fixture hole
4. External vacuum control unit (modular)
5. Digital vacuum pressure gauge (optional)
6. 4 elliptical mounting holes of 4.5x6
7. 15-pin D-SUB socket (optional for EZP2V)
8. DIN rail mounting slot
9. Vacuum suction end interface $\phi 6/\phi 8$
10. Centralized positive pressure air inlet $\phi 6$
11. Centralized external vacuum connection $\phi 8$

How to Order?

EZPV Multi-pin external vacuum control unit

Series Code	Vacuum Gauge Specifications			Vacuum Connection	Assembly Links	
EZPV: Multi-pin external vacuum control unit	Code	Supply Valve	Air breaking valve	Blank: without gauge W: External vacuum detection N: NPN Type P: PNP Type	06: $\phi 6$ 08: $\phi 8$	2F: 2 Links 3F: 3 Links ... 12F: 12 Links
	K	NC	NC			
	R	Self-holding	NC			

Note: R-type energized for 20ms or more, vacuum occurs and lasts, air-breaking valve energized, vacuum stops.

Ordering Example:

EZPV Multi-pin external vacuum control unit, NC supply valve, NC Air breaking valve, NPN gauge size, $\phi 6$ vacuum connection, through-port exhaust ($\phi 6$), number of cartridges 6 positions. The Code: EZPV-K-N-06-6F

EZP2V Dual multi-pin external vacuum control unit

Series Code	Vacuum Gauge Specifications			Vacuum Connection	Assembly Links	
EZP2V: Dual multi-pin external vacuum control unit	Code	Supply Valve	Air breaking valve	N: NPN Type P: PNP Type	06: $\phi 6$ 08: $\phi 8$	2F: 2 Links 3F: 3 Links ... 12F: 12 Links
	K	NC	NC			
	R	Self-holding	NC			

Note: R-type energized for 20ms or more, vacuum occurs and lasts, air-breaking valve energized, vacuum stops.

Ordering Example:

EZP2V Dual multi-pin external vacuum control unit, NC supply valve, NC Air breaking valve, NPN vacuum gauge specifications, $\phi 6$ vacuum interface, assembled into 6 positions, and its order code is: EZP2V-K-N-06-6F

EZPV/EZP2V Integrated Vacuum Generator (Multi-pin Type)

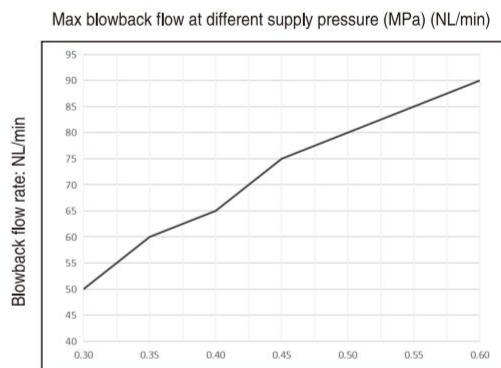
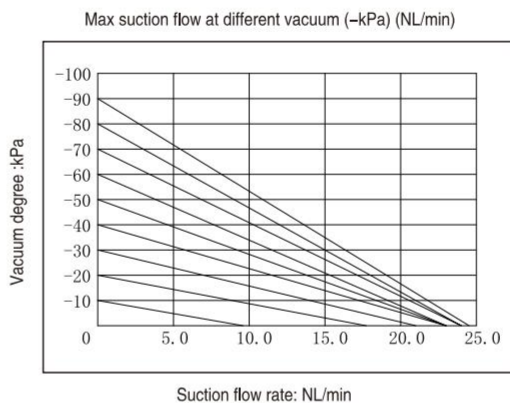


Max suction flow at different vacuum (-kPa) (NL/min)

Specifications and Models	-10	-20	-30	-40	-50	-60	-70	-80	-90
EZPV/EZP2V single unit	9.3	17.0	21.0	22.0	23.0	23.0	24.0	24.0	24.5

Max blowback flow at different supply pressure (MPa) (NL/min)

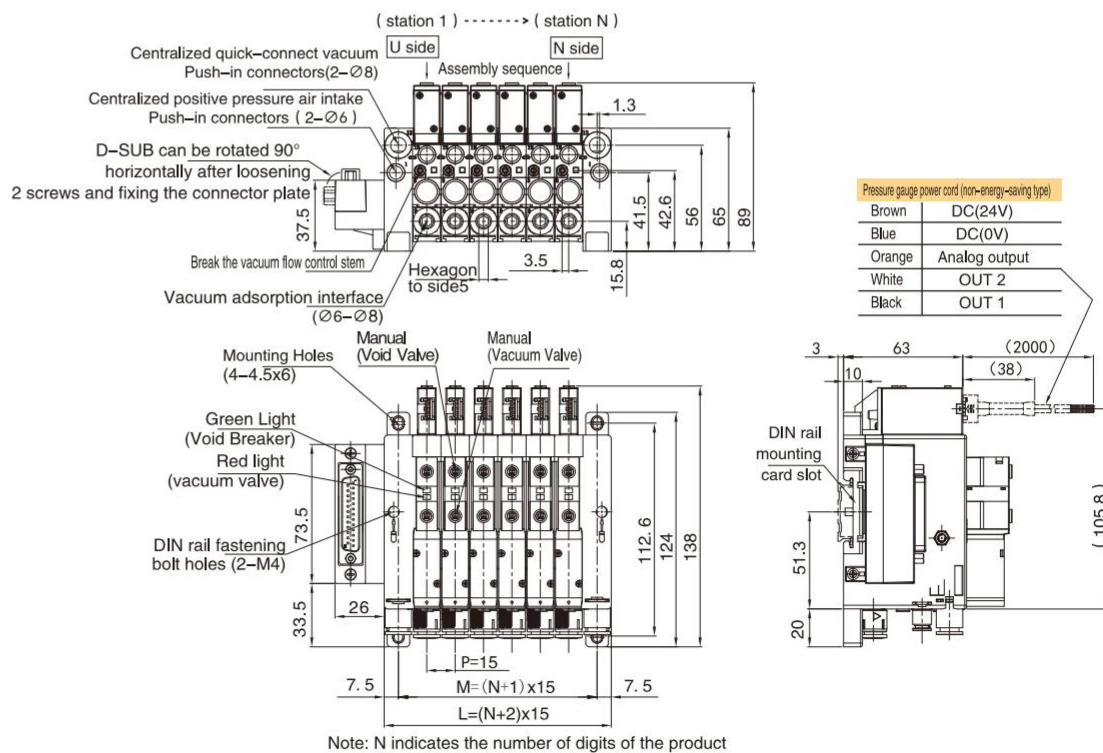
Specifications and Models	0.3	0.35	0.4	0.45	0.5	0.55	0.6
EZPV/EZP2V single unit	50	60	65	75	80	85	90



Dimension(mm)

EZPV□-N/P Vacuum Pressure Gauge Outline Drawing

EZPV□-N/P 带真空压力表外形图

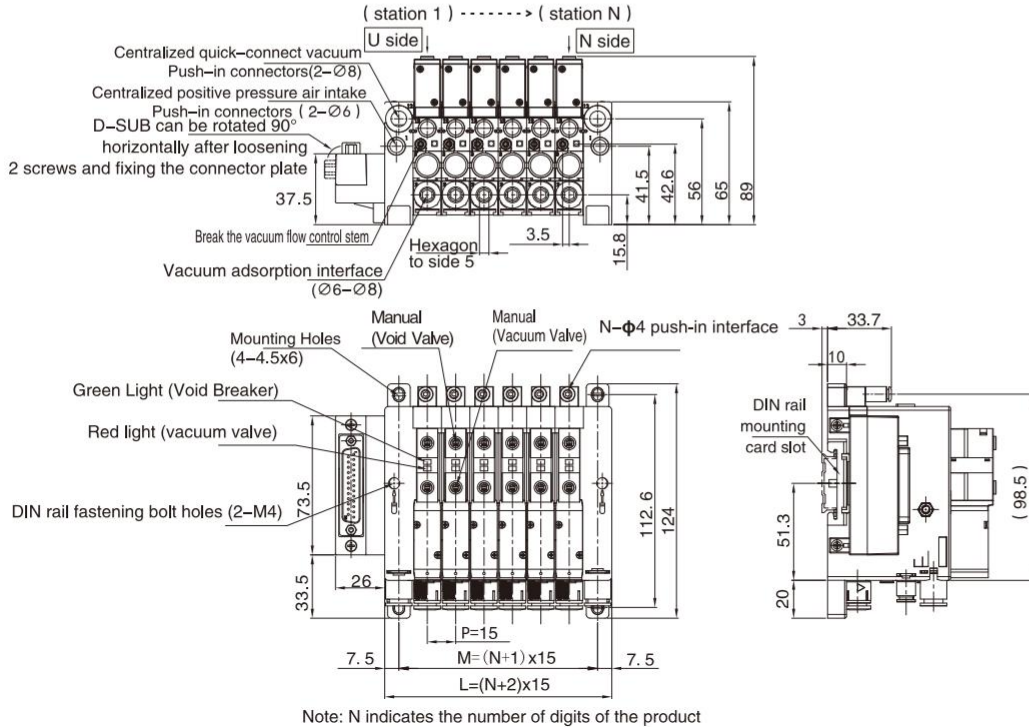


EZPV/EZP2V Integrated Vacuum Generator (Multi-pin Type)

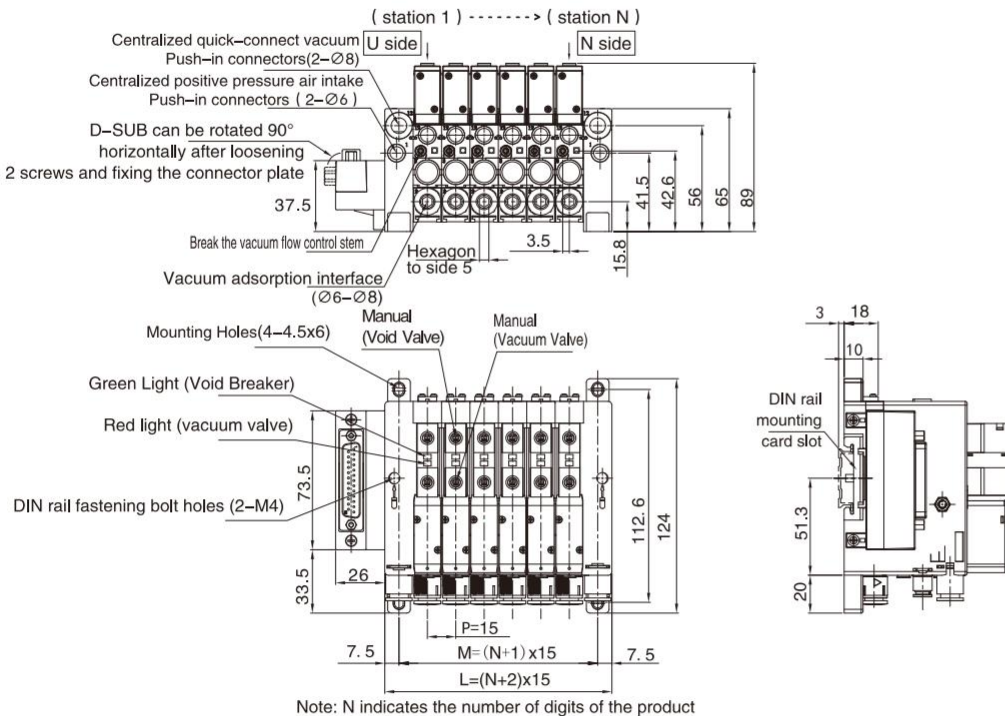


Dimension(mm)

EZPV□-W external vacuum detection outline drawing



EZPV□ without vacuum gauge outline drawing



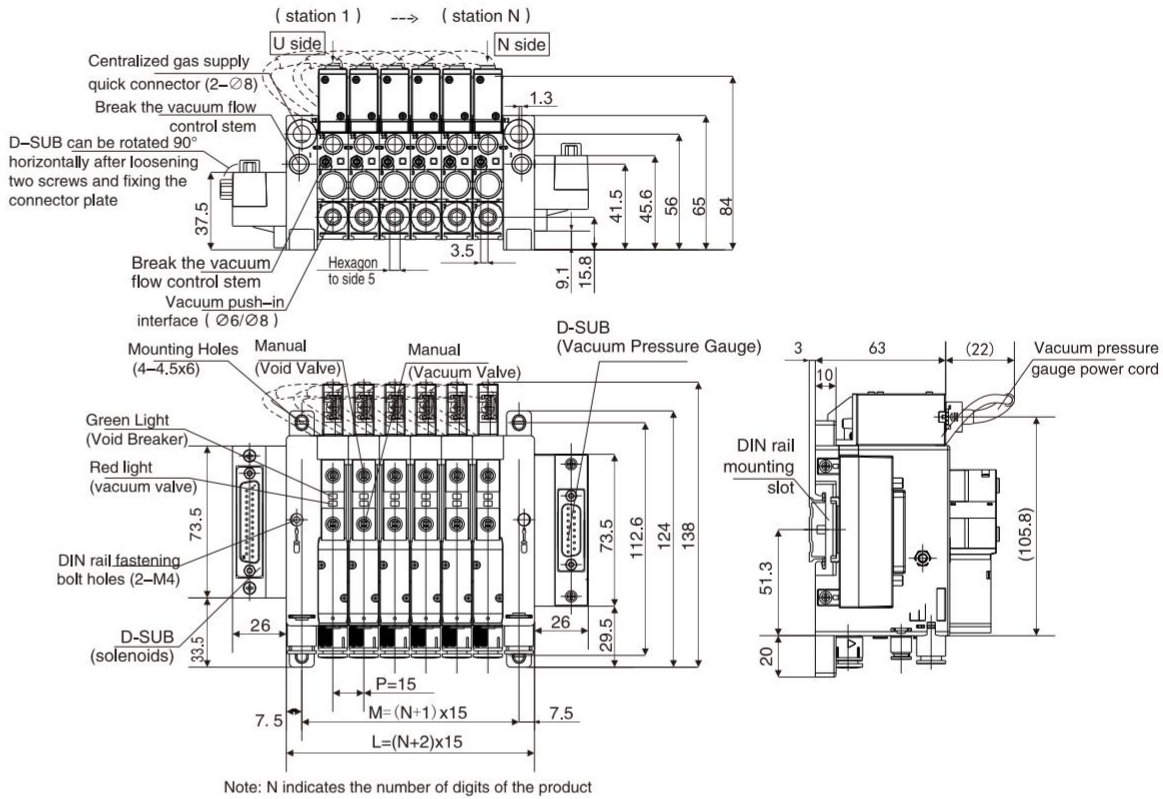
6
EZPV
EZP2V

EZPV/EZP2V Integrated Vacuum Generator (Multi-pin Type)



Main Dimension

EZP2V□-N/P Vacuum Pressure Gauge Outline Drawing



How to Order? Multi-pin cable

Cable core count – Connector Series – Cable length – Injection molding

D25: 25-pin D-sub connector 25:25 cores (Not more than 12 links)
15D: 15 cores (Not more than 7 links)

1M: Cable length 1 m
2M: Cable length 2 m
3M: Cable length 3 m
.....
Remarks: The cable length can be customized

A

Cable core count – Cable core count – Cable length – Recognition code – Injection molding

D25: 25-pin D-sub connector 25:25 cores (Not more than 12 links)
16D: 16 cores (Not more than 7 links)

1M: Cable length 1 m
2M: 2 m cable length
3M: Cable length 3 m
.....
Remarks: The cable length can be customized

TL: Flexible towline cable

A

Cable core count – Cable core count – Cable length – Recognition code – A

D15: 15-pin D-sub connector 15D: 15 cores

1M: Cable length 1 m
2M: 2 m cable length
3M: Cable length 3 m
.....
Remarks: The cable length can be customized

Blank; Standard Cable
TL: Flexible towline cable

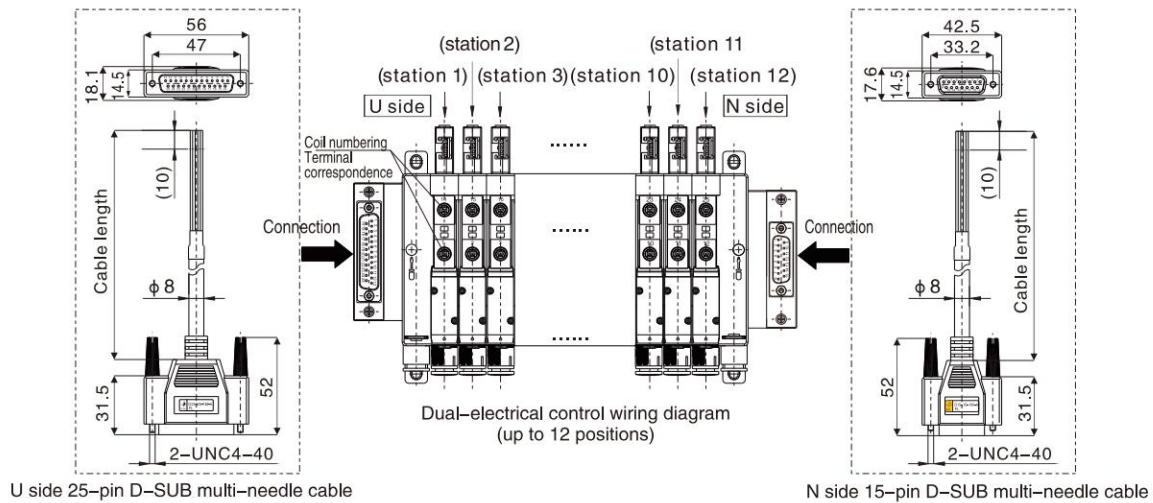
Injection molding

6
EZPV
EZP2V

EZPV/EZP2V Integrated Vacuum Generator (Multi-pin Type)



EZPV/EZP2V Multi-needle Position Wiring Diagram



U side 25-pin D-SUB multi-needle cable

N side 15-pin D-SUB multi-needle cable

Pin Correspondence Table (U side 25-pin D-SUB for Solenoid V (U side 25-pin D-SUB multi-needle cable))					
Terminal Number	White Cable (Standard)		Gray Cable (Flexible Drag Chain)		Wiring Description
	D25-25	D25-15D	D25-25	D25-16D	
1	Red Black	Red Black	Purple	Purple	1# Vacuum Valve
2	Red White	Red	Orange	Orange	2# Vacuum Valve
3	Red	Orange Black	Pink	Pink	3# Vacuum Valve
4	Orange Black	Orange	Gray	Gray	4# Vacuum Valve
5	Orange White	Yellow Black	White	White	5# Vacuum Valve
6	Orange	Yellow	Red	Red	6# Vacuum Valve
7	Yellow Black	Pink	Green	Green	7# Vacuum Valve
8	Yellow	-	Black	-	8# Vacuum Valve
9	Pink Black	-	Purple with 1 dot	-	9# Vacuum Valve
10	Pink	-	Orange with 1 dot	-	10# Vacuum Valve
11	Blue White	-	Pink with 1 dot	-	11# Vacuum Valve
12	Blue	-	Gray with 1 dot	-	12# Vacuum Valve
13	Black	Black	Yellow	Black	COM
14	Green	Blue	White with 1 dot	White with dots	1# Vacuum Break Valve
15	Purple White	Green	Red with 1 dot	Red with dots	2# Vacuum Break Valve
16	Purple	Light Green	Green with 1 dot	Green with dots	3# Vacuum Break Valve
17	Brown White	Purple	Black with 1 dot	Black with dots	4# Vacuum Break Valve
18	Brown	White	Purple with 2 dots	Purple with dots	5# Vacuum Break Valve
19	Green Black	Brown	Orange with 2 dots	Orange with dots	6# Vacuum Break Valve
20	Gray Black	Gray	Pink with 2 dots	Pink with dots	7# Vacuum Break Valve
21	Gray	-	Gray with 2 dots	-	8# Vacuum Break Valve
22	White Black	-	White with 2 dots	-	9# Vacuum Break Valve
23	White	-	Red with 2 dots	-	10# Vacuum Break Valve
24	Green White	-	Green with 2 dots	-	11# Vacuum Break Valve
25	Light Green	-	Black with 2 dots	-	12# Vacuum Break Valve

Pin Correspondence Table (U side 25-pin D-SUB for Solenoid Valves (N side 15-pin D-SUB multi-needle cable))					
Terminal Number	White Cable (Standard)		Gray Cable (Flexible Drag Chain)		Wiring Description
	D15-15	D15-15	D15-15(TL)	D15-15(TL)	
1	Red Black	Red	Purple	Orange	1# Pressure gauge switch quantity
2	Red	Orange Black	Orange	Pink	2# Pressure gauge switch quantity
3	Orange Black	Orange	Pink	Grey	3# Pressure gauge switch quantity
4	Orange	Yellow Black	Grey	White	4# Pressure gauge switch quantity
5	Yellow Black	Yellow	White	Red	5# Pressure gauge switch quantity
6	Yellow	Pink	Red	Green	6# Pressure gauge switch quantity
7	Pink	Blue	Green	Black with dots	7# Pressure gauge switch quantity
8	Pink	Green	Black with dots	Purple with dots	8# Pressure gauge switch quantity
9	Blue	Purple	Purple with dots	Orange with dots	9# Pressure gauge switch quantity
10	Green	Light Green	Orange with dots	Pink with dots	10# Pressure gauge switch quantity
11	Pink	Purple	Pink with dots	White	11# Pressure gauge switch quantity
12	White	White	Grey with dots	Black	12# Pressure gauge switch quantity
13	Brown	Brown	White with dots	-	/
14	Gray	Gray	Red with dots	-	Connect to power "0V"
15	Black	Black	Black	-	Connect to power "24V"

NOTE: The above table is for Double Multi only, do not wire with electricity.